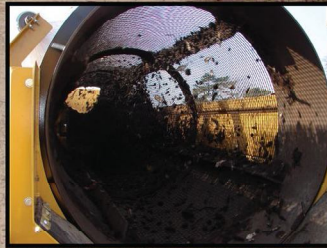


# ANACONDA

## TD516 TRACKED TROMMEL



### The TD516 tracked trommel

is a compact trommel screen designed with quality, performance and ease of movement at the core!

The TD516 trommel screen is the latest in a series of mobile screening products designed with quality and affordability in mind. Quick and easy to transport around, the TD516 is robust and easy to use ensuring optimum levels of performance every time. Applications include compost screening, soil screening, processing C&D waste, ash and wood chip/bark.

### OPTIONS

- SCROLL SCREENING DRUM
- REMOTE TIPPING GRID
- JCB 444 DIESELMAX WATER COOLED ENGINE  
– 84 HP (63KW)
- PUNCH PLATE MESH
- HYDRAULIC AIR BLOWER
- WHEEL CHASSIS

### FEATURES & BENEFITS

- SCREENING DRUM 5.15M (16'9") LONG X 1.37M (4'7") DIAMETER
- FORWARD AND REVERSE 4 WHEEL DRIVE DRUM SYSTEM
- VARIABLE SPEED ON SCREENING DRUM AND ALL CONVEYORS
- QUICK DRUM RELEASE AND REPLACE SYSTEM
- DRUM ANGLE ADJUSTABLE 0° TO 4°
- LOW LEVEL ADJUSTMENT AND CHANGE FACILITY FOR DRUM BRUSHES
- DRUM COLLECTION CONVEYOR SLIDES OUT FOR EASE OF MAINTENANCE
- DEUTZ TD2011 74HP (58KW) AIR COOLED ENGINE
- EASY ACCESS TO ALL ENGINE CONSUMABLES
- FOLDS AND TRACKS INTO/OUT OF CONTAINER WITH MINIMAL BREAKDOWN
- SET UP TIME 20 MINUTES

# ANACONDA